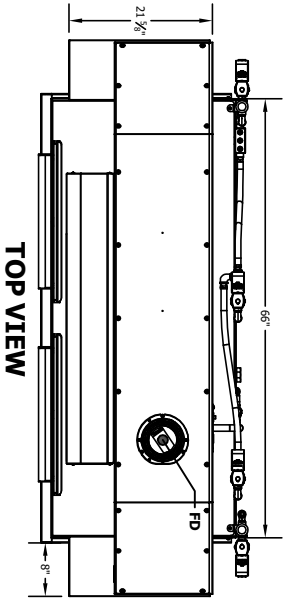


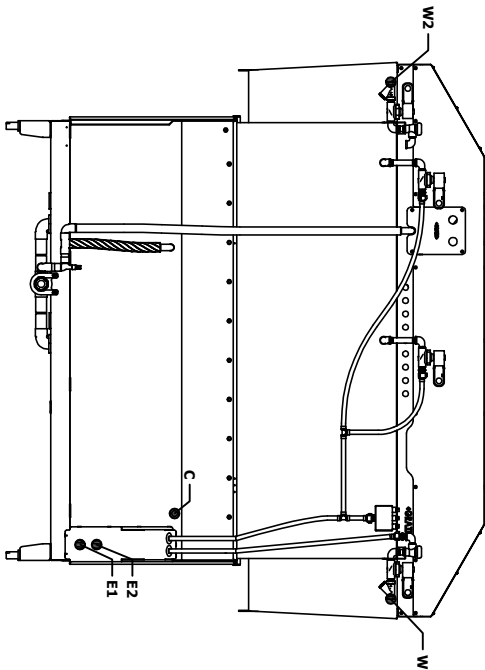
INSTALLATION CONNECTIONS

Description	Note
D DRAIN CONNECTION	1-1/2" F-NPT
W HOT WATER INLET (110° F MIN.)	1/2" F-NPT
E1 MAIN ELECTRICAL (SINGLE & 2-POINT)	1-3/8" HOLE
E2 BOOSTER ELECTRICAL (2 PT ONLY)	1-3/8" HOLE
C CHEMICAL LINE & SIGNAL ACCESS	1/2 HOLES (4)
W2 COLD WATER INLET (75° F MAX.)	1/2" F-NPT
FD FAN DISCHARGE (VG ONLY)	6" CLEARANCE

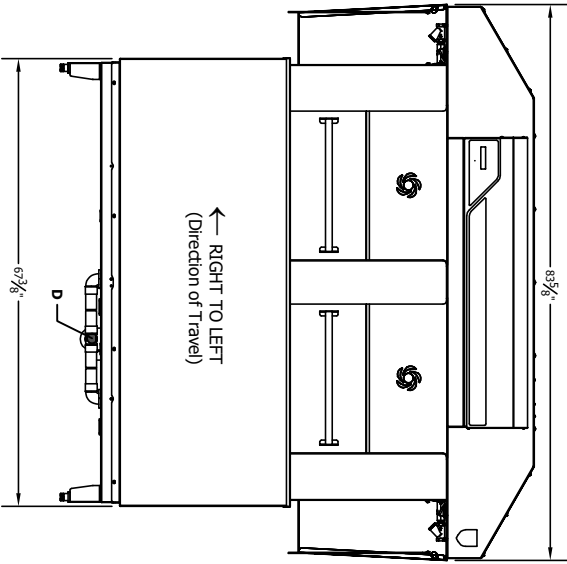
- NOTES:
1. ALLOW 6" MINIMUM CLEARANCE ABOVE THE VENT FAN DISCHARGE
 2. ALLOW 24" MIN. CLEARANCE BELOW DISH TABLE TO SERVICE ELECTRICAL EQUIPMENT



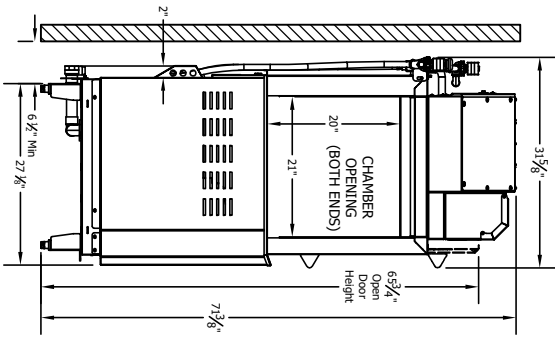
TOP VIEW



REAR VIEW



FRONT VIEW



SIDE VIEW

UNLESS OTHERWISE SPECIFIED, DIMENSIONS ARE IN INCHES

XX XXX FRACTIONS ANGLES
±.02 ±.005 ±1/32 ±1/2

THE INFORMATION ON THIS DRAWING IS THE PROPERTY OF INSINGER MACHINE COMPANY AND MAY NOT BE DISCLOSED TO ANY OTHER PARTY WITHOUT THE WRITTEN CONSENT OF INSINGER MACHINE COMPANY. THIS DRAWING IS NOT TO BE USED FOR ANY OTHER PROJECT WITHOUT THE WRITTEN CONSENT OF INSINGER MACHINE COMPANY. ANY VIOLATION OF THE PROPRIETARY RIGHTS OF INSINGER MACHINE COMPANY WILL BE THE PARTY RESPONSIBLE TO APPROPRIATE LEGAL ACTION.

insinger
INSINGER MACHINE CO.
6426 STATE ROAD
PHILADELPHIA, PA 19135

DRAWN BY: DATE: 01/29/25
SCALE: 1:1
Phone: (215) 624-4800

MODEL: ADMIRAL 66 ADVANCED R-L (VAPOR GUARD)

DESCRIPTION: High Temperature Soda Glycerol Deteriating Machine
Right Hand Feed
With 3000 Gallon Capacity
REV: A
DWG NUMBER: 1000-10105
REVISION DATE: 01/29/25
SHEET 1 OF 1